



98XX E-Z PULL REPAIR PROCEDURE



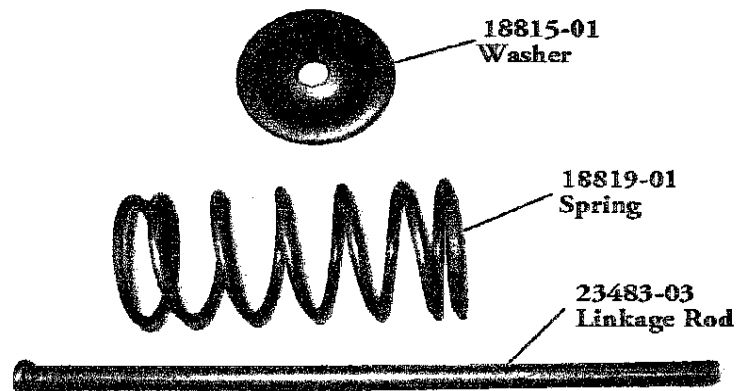
Read and understand these instructions in their entirety before starting the repair procedure.

This procedure will provide a means of repairing the E-Z Pull pin system when the 18817-XX linkage has pulled through the 18815-01 washer as a result of excessive loading on the pull handle.

The procedure applies to the 98XX slider family as well as many other slides utilizing the E-Z Puller system.

If the linkage has pulled through the washer, it can be repaired using the kit below.

23486-01 E-Z Puller Repair Kit

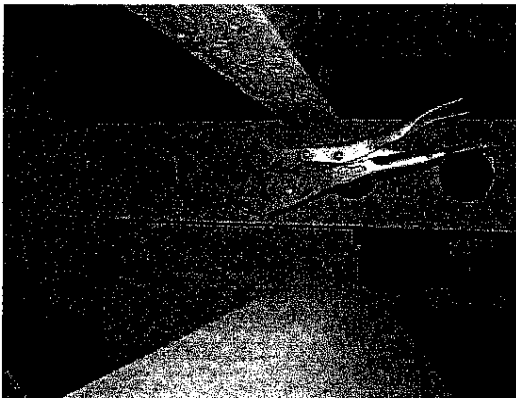
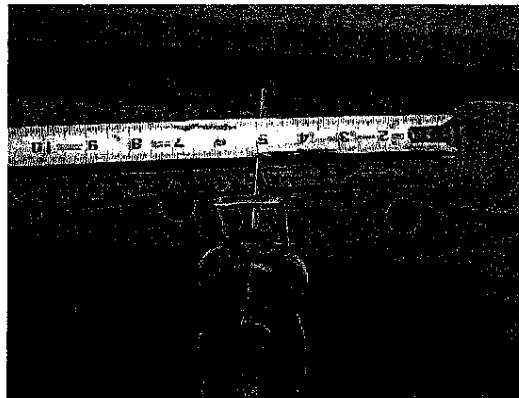


98XX E-Z PULL REPAIR PROCEDURE	ER: 20042400-01	REV DATE: 5-2-05	SHEET 1 OF 4
	PROJ: 20042400	REV: A	DRAWING NO: 20042402

Thank you!

PROCEDURE:

Examine the E-Z Pull pin assembly and ascertain that the damage is limited to the 18817-XX linkage and/or the 18815-01 washer. Damage outside this area is not covered by this repair procedure. If any additional worn components are discovered at this time, they should be replaced.

**Photo 1****Photo 2**

1. If the system is repairable, position the slider in a manner that will facilitate the removal of the linkage (i.e. clear of any trailer cross-members or other obstructions). Ensure that all lock pins are engaged and extended fully through the body rail.
2. With the use of a vice grip, secure the lock pin so that it remains in the outboard position (See photo 1).
3. Measure and mark the linkage five inches from the edge of the lock pin cage*. Cut where marked (See photo 2).
4. Remove the 18819-01 engagement spring and the 18815-01 washer from the pin cage.

***NOTE:** *On some trailers, it may be necessary to shorten the 22483-03 repair link and cut the damaged linkage closer to the pin cage in order to avoid obstacles and/or to adapt to different slider configurations during the repair. The longer you leave the link, the easier it will be to re-install the repair components. Shorten the link as required, but make sure the original linkage and repair link overlap at least 1 inch to facilitate welding.*

98XX E-Z PULL REPAIR PROCEDURE	ER: 20042400-01	REV DATE: 5-2-05	SHEET 2 OF 4
	PROJ: 20042400	REV: A	DRAWING NO: 20042402

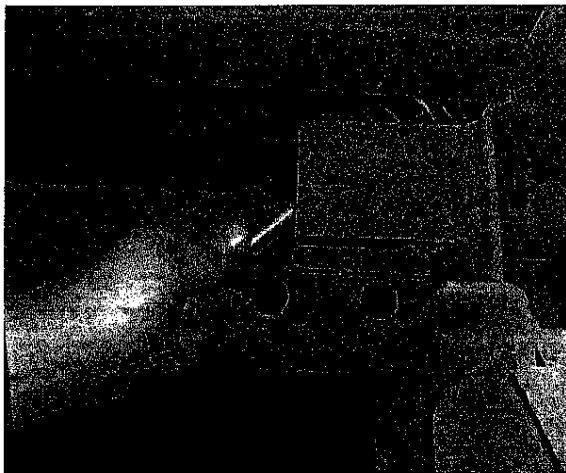


Photo 3

5. With the washer and engagement spring in place around the 23483-03 linkage, insert the end of the repair linkage through the open side of the pin cage and out the hole in the back.**

6. Pull the linkage until the engagement spring collapses, then tilt the compressed spring and linkage into position (See photo 3). Release the linkage so the spring expands and the washer is in contact with the back of the lock pin.

****NOTE:** *The cage orientation and distance from the crossmember will be different for some models of sliders, and this procedure will need to be adjusted accordingly.*

7. Clean both linkages for welding purposes.
8. Overlap and clamp linkages in place, making certain that there is no interference between the link and cage. Ensure that all slack in the pin system is removed so that lock pins are fully released and engaged into the body rails (See photo 4).

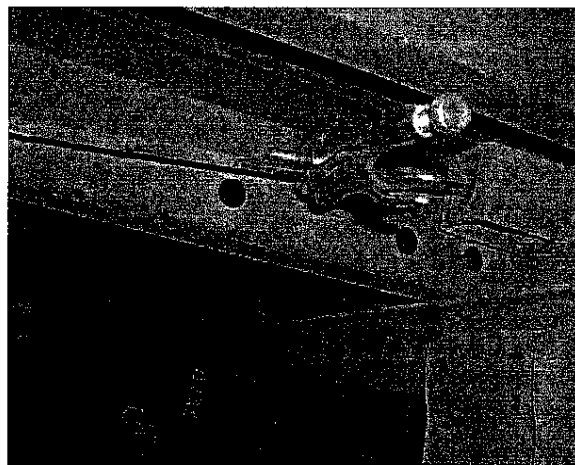


Photo 4

98XX E-Z PULL REPAIR PROCEDURE	ER: 20042400-01	REV DATE: 5-2-05	SHEET 3 OF 4
	PROJ: 20042400	REV: A	DRAWING NO: 20042402

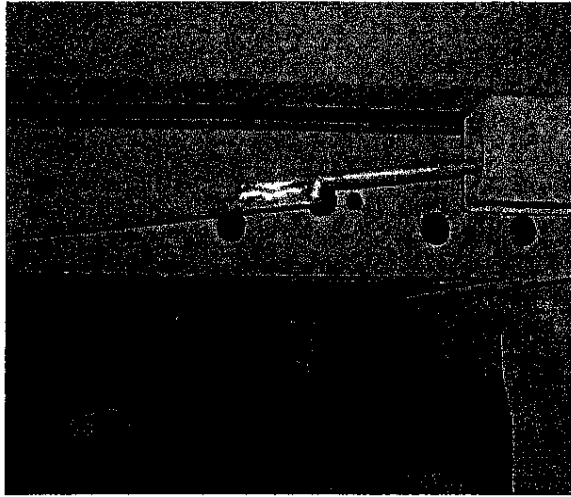


Photo 5

9. Tack weld the linkage.
10. Remove clamps, operate pull handle, and examine pin extension and retraction. **Make sure all lock pins fully retract and re-engage the body rails.** If this cannot be achieved, adjust system until proper operation is obtained.
11. Weld linkages together as shown (See photo 5). **Take care to avoid excessive heat and undercutting in all welds.**
12. Paint repaired area to avoid corrosion.

If at any stage in this repair procedure you find that the operational requirements for the pin system cannot be met, additional repair may be required. Should you have any questions, please contact Hutchens Industries at 1-800-654-8824.

98XX E-Z PULL REPAIR PROCEDURE	ER: 20042400-01	REV DATE: 5-2-05	SHEET 4 OF 4
	PROJ: 20042400	REV: A	DRAWING NO: 20042402